



```
package com.ds.ucd.be.becore.solr;  
  
import ...  
  
public final class LocationUtils {  
  
    /**  
     * Parses Point from it's String representation  
     * @param locationString - String that represents a location  
     * @return org.springframework.data.solr.core.geo.Point  
     */  
    public static Point parseLocation(String locationString)  
        Preconditions.checkNotNull(locationString)  
        locationString = locationString.trim();  
  
    if (locationString.contains(",")) {  
        locationString = locationString.replace(",", " ");  
    }  
  
    if (locationString.contains(" ")) {  
        locationString = locationString.replace(" ", ",");  
    }  
  
    String[] location = locationString.split(",");  
    Preconditions.checkNotNull(location, "locationString must not be empty");  
    double lat = Double.parseDouble(location[0]);  
    double lon = Double.parseDouble(location[1]);  
  
    return new Point(lat, lon);  
}
```



Linux and System Administration

Launch Your Career in Linux and System Administration

Linux and System Administration Program: Master the Heart of IT Infrastructure

As technology grows, the need for skilled IT professionals who can manage and maintain systems has never been higher. Digitalearn's Linux and System Administration program is designed for individuals who want to learn how to manage Linux systems and ensure they run smoothly. Whether you are a beginner or have some experience in IT, this course will equip you with the skills needed to manage servers, configure networks, and secure systems.

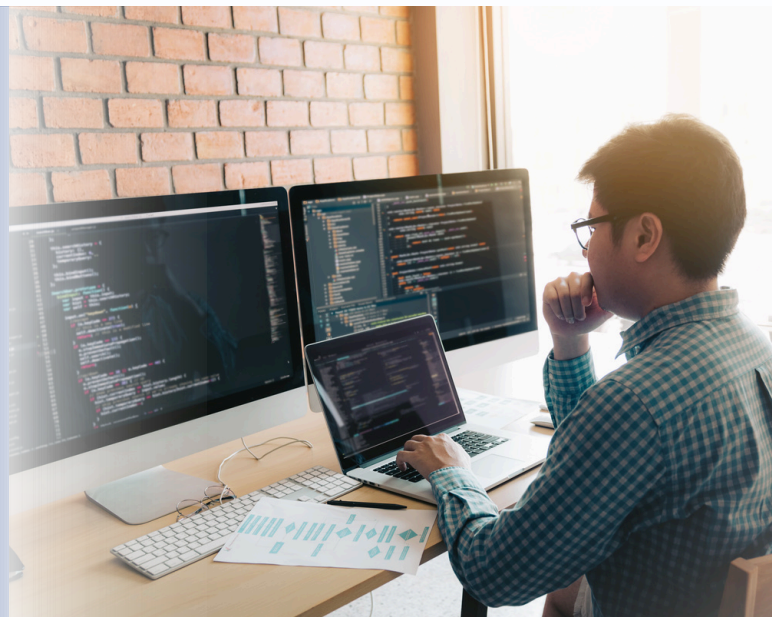
This program combines essential Linux commands, system administration techniques, and troubleshooting skills, making it the perfect choice for those who want to build a career in IT support, system administration, or DevOps.

Linux System Administration:

- Learn to install, configure, and maintain Linux systems and servers.
- Understand how to manage file systems, users, and software packages.
- Gain practical knowledge of networking, system security, and troubleshooting.

Key Benefits

- **Linux Skills:** Learn how to use and manage Linux, one of the most popular and powerful operating systems used today.
- **System Security:** Learn how to secure systems and protect them from cyber threats.
- **Practical Learning:** Work with real systems and gain hands-on experience through labs and projects.
- **Job Ready:** With the right skills, you'll be prepared to step into roles such as System Administrator, Network Administrator, or IT Support Specialist.



How this program works differently with highlighted **Key Solutions** ?



Career Preparation

- Mock Interview Prep (Technical + Behavioral)
- Resume Building (Ready-to-use Templates)
- Job Application Guide (Tips for Finding the Right Job)
- Internship Benefits (Hands-on Experience with Tools)



Practical Learning

- Live Projects (5+ Real-World Projects)
- Practical Sessions (Interactive Online Learning)
- Updated Tools and Techniques (Stay Ahead with the Latest in Tools)



Learning Support

- Personality Development Classes (Enhance Soft Skills)
- Class Recordings (Access Anytime for Review)
- E-books (Comprehensive Learning Materials)



Certification and Exams

- Exam Simulation (Prepare Effectively)
- Exam vouchers (Subject to Availability)



Ongoing Mentorship

- Lifetime Career Mentorship (Guidance Throughout Your Career)



Continuous Learning

- Updated Content (Stay Current with Market Trends)
- Demos (Optional Hands-on Demonstrations)

Why Choose the **Linux** and **System Administration Program**?

- **In-Demand Skills:** Linux system admins are needed in almost every industry – tech, healthcare, finance, and more.
- **Career Growth:** Linux professionals often earn higher salaries and have great career prospects.
- **Global Certification:** Gain certifications that are recognized worldwide, opening doors for jobs around the globe.

Career Pathways:

- **Linux System Administrator:** Manage Linux systems and servers for businesses and organizations.
- **Network Administrator:** Take care of the network infrastructure, ensuring it runs smoothly and securely.
- **DevOps Engineer:** Help bridge the gap between development and operations, automating systems and improving workflow.
- **IT Support Specialist:** Troubleshoot and resolve issues with Linux-based systems in the workplace.

The Linux and System Administration course by Digitalearn is designed to help you gain hands-on experience and real-world skills. With these tools, you'll be ready to work in the growing field of IT infrastructure and system management.

Linux and System Administration Curriculum

Module 1: Introduction to Linux

- Overview of Linux operating system
- Understanding Linux distributions (Ubuntu, CentOS, etc.)
- Installing and setting up Linux systems

Module 2: Basic Linux Commands

- Using terminal commands
- File management and directory structure
- File permissions and users

Module 3: Linux File Systems

- Understanding Linux file systems (ext4, XFS)
- Mounting and unmounting file systems
- Disk management and partitioning

Module 4: User and Group Management

- Creating and managing user accounts
- Setting permissions and roles
- Managing groups and file access

Module 5: Networking and Network Configuration

- Configuring network interfaces
- Understanding IP addressing and subnetting
- Working with network tools like ping, ifconfig, netstat

Module 6: Security and Firewalls

- Setting up basic firewall rules
- Using tools like iptables and ufw
- Configuring SSH and securing remote access

Module 7: System Monitoring and Troubleshooting

- Checking system performance (CPU, memory, disk usage)
- Using tools like top, htop, vmstat
- Troubleshooting logs and error messages

Module 8: Package Management and Software Installation

- Installing and removing software packages using apt, yum
- Managing repositories
- Compiling and installing software from source

Module 9: System Backup and Recovery

- Setting up automatic backups
- Restoring systems after failure

Module 10: Virtualization and Cloud Computing

- Introduction to virtualization (using KVM, VirtualBox)
- Managing virtual machines
- Working with cloud providers (AWS, Google Cloud)

Module 11: Scripting and Automation

- Basic scripting in bash
- Writing automation scripts for system tasks
- Scheduling jobs with cron

Module 12: Performance Tuning and Optimization

- Optimizing system resources for better performance
- Setting up system limits and resource allocation
- Using monitoring tools for performance tuning

Module 13: Linux Server Administration

- Configuring and managing web servers (Apache, Nginx)
- Setting up and managing databases (MySQL, PostgreSQL)
- Managing file sharing services (Samba, NFS)

Module 14: Cloud Security and Linux Security Best Practices

- Securing Linux in the cloud
- Best practices for hardening Linux systems
- Implementing encryption and secure communications

How Schedule and Commitments will work?



Duration
2 months
(8 weeks)



Mode
Online Live
Classes + Hands-
on Training



Commitment
2 Months /
2 hours a Day /
Mon-Wed-Thur-Sat

Career Pathways:

- Linux System Administrator: Manage Linux servers and ensure they run efficiently.
- Network Administrator: Set up and manage networks, including security and performance.
- IT Support Specialist: Assist users with system issues and troubleshooting.
- DevOps Engineer: Automate and optimize system setups for faster deployments.

The Linux and System Administration course by Digitalearn provides you with all the skills needed to excel in IT. Become a skilled Linux admin and open the door to new career opportunities in the tech field.

Upon Completing the **Program**, You'll Receive:

- Digitalearn Certified Linux and System Administration Certificate
- Portfolio-ready projects and access to career advancement resources



4.9 Average
Rating



3500+
Students
Got Job



4000+
Satisfied
Learners



100+ Highly
Qualified
Trainers

What Kind of Support Will You Receive?



Mentorship

A dedicated mentor to guide you through the learning journey



Alumni Network

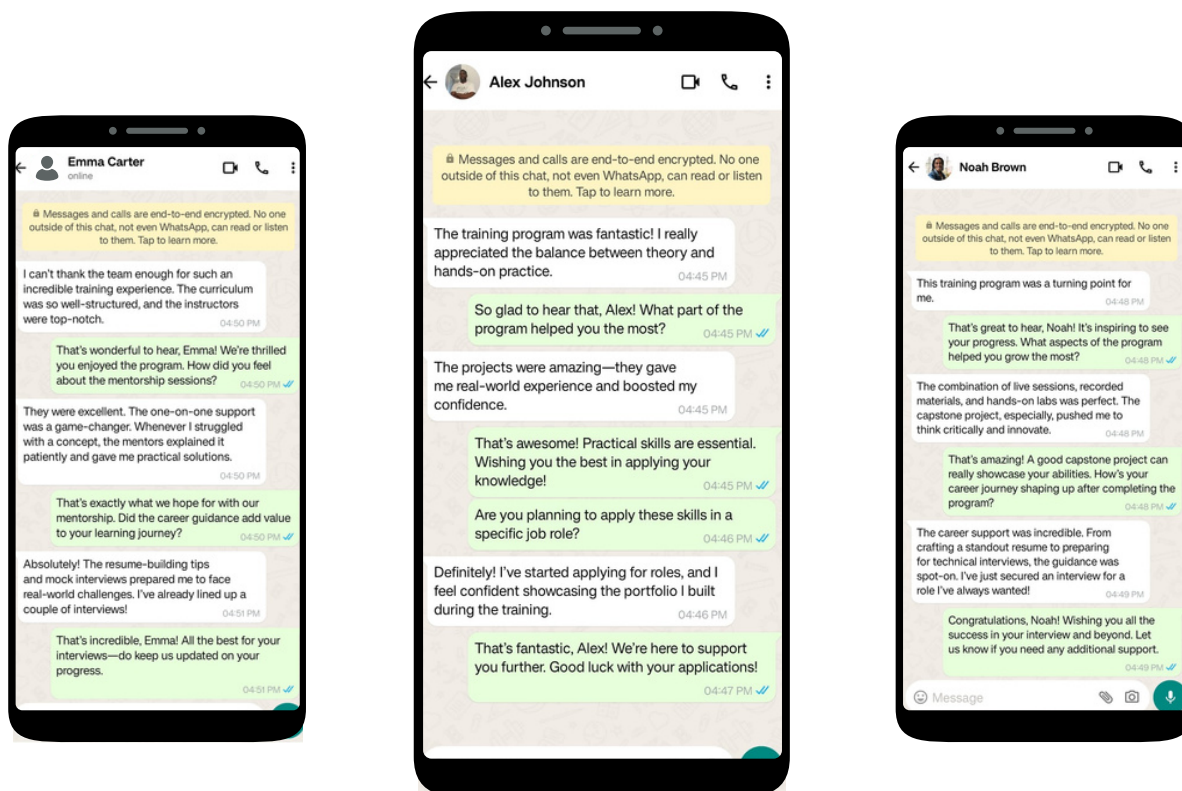
Access to a supportive community of professionals



Career Assistance

Networking tips, job search strategies, and interview prep

What our **students** say ?



Linux and System Administration **FAQ**

? **What is Linux and System Administration?**

- ✓ Answer: Linux and System Administration involves managing Linux-based systems, configuring servers, ensuring system security, and troubleshooting issues. It covers everything from installing Linux to maintaining secure, efficient systems.

? **Who should pursue Linux and System Administration?**

- ✓ Answer: This course is ideal for:
- IT professionals who want to specialize in Linux system administration.
 - Entry-level IT enthusiasts looking to start a career in system management.
 - Current system administrators wanting to expand their knowledge of Linux.

? **What are the prerequisites for Linux and System Administration?**

- ✓ Answer: No formal prerequisites. However, basic knowledge of computers and networking will be helpful. Beginners can start with this course and gradually build their skills.

? **How long does it take to complete the Linux and System Administration course?**

- ✓ Answer: The course typically takes about 4 to 6 weeks to complete, depending on your pace and availability.

? **What is the format of the Linux certification exam?**

- ✓ Answer: The exam is multiple-choice with practical exercises. It tests your ability to manage, secure, and troubleshoot Linux systems.

? **How much does the Linux and System Administration certification cost?**

- ✓ Answer: The exam fee for the Linux certification is around \$299. Training fees can vary based on your provider.

? **How can I prepare for the Linux and System Administration exam?**

- ✓ Answer: You can prepare by attending training, using study materials, and practicing in labs. Hands-on experience is crucial to understanding real-world Linux system management.

? **What job roles can I pursue after getting Linux and System Administration certified?**

- ✓ Answer: With this certification, you can pursue roles such as:
- Linux System Administrator
 - Network Administrator
 - IT Support Specialist
 - Cloud Engineer
 - Cybersecurity Administrator

? **Are there any renewal requirements for Linux certifications?**

- ✓ Answer: Linux certifications may require renewal after a few years, usually by completing a certain number of Continuing Professional Education (CPE) credits.



Social Media Handles:

 @digitalearn_official

 Digitalearn

Ask your queries to our experts?



+91 7457077622
+91 9012495693



www.digitalearn.info



support@digitalearn.info



Office Hours :
09:00 AM EST to 07:00 PM EST